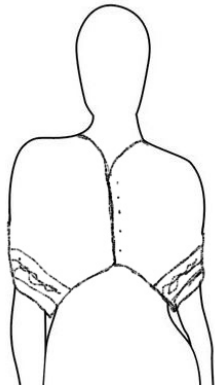
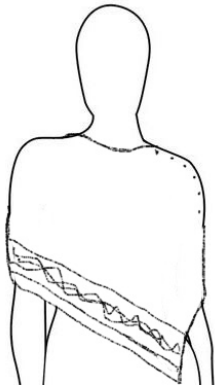
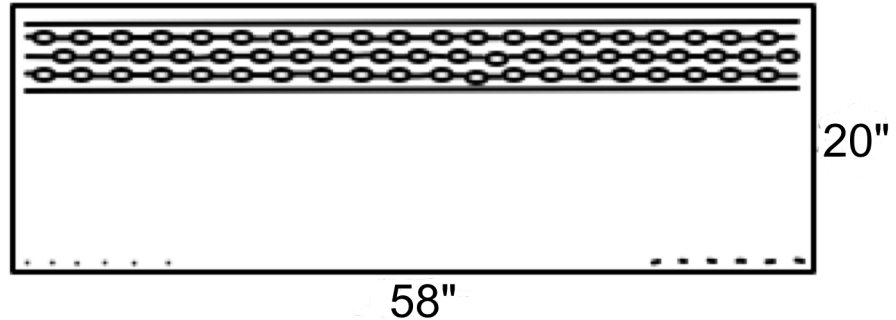


Pebble Beach Shawl

Pattern Submission



The Pebble Beach Shawl is a 20" wide by 58" long, rectangular shawl. It features a 4.75" cable band running the length of the shawl along one side. The rest of the shawl is worked in seed stitch. On the side opposite the cable, there are six buttons at one end and six matching buttonholes on the other. The shawl can be worn unbuttoned and just wrapped or buttoned with the buttons down the front or down one shoulder for different looks. It is perfect for someone who is always fidgeting to keep their shawl on or doesn't want to mess with a shawl pin.



Suggested Yarn: Wool of the Andes sport weight in Camel Heather or Thirst Heather (though any color in the palette would look lovely).

Estimated Yarn Needed: 9 balls

Gauge: 6 stitches per inch

Cable Pattern: 32 stitches wide with a 20-row repeat.

(Swatch was not knit in Wool of the Andes, but with another sport weight wool yarn.)

Kathy Lewinski has been knitting for over 25 years and currently has 96 patterns available. She is known for her color work mittens, the Mitten Garland Advent Calendar and the Twelve Days of Christmas Mitten Garland. She has had patterns in BHG Holidays Crafts and the upcoming book *A Madame and a Detective Walk into a Bar* (WWMDFK Vol. 5).

Contact Information:

Name

Email Address

Ravelry ID:

Address